

Cultural Diversity: Societal Roles

By

Johnpaul M., Diane R., Navin J., Karma Y., Mekchandra R.

CLDV 100, Fall 2019

Prof. Alapo



Introduction

The U.S. Social Class Ladder

Social Class	Education	Occupation	Income	Percentage of Population
Capitalist	Prestige university	Investors and heirs, a few executives	\$500,000+	1%
Upper Middle	College or university, often with postgraduate study	Professionals and upper managers	\$90,000+	14%
Lower Middle	At least high school; perhaps some college or apprenticeship	Semiprofessionals and lower managers, craftspeople, foremen	About \$40,000	30%
Working Class	High school	Factory workers, clerical workers, retail sales, low-paid craftspeople	About \$30,000	30%
Working Poor	Some high school	Laborers, service workers, low-paid salespeople	About \$18,000	22%
Underclass	Some high school	Unemployed and part-time, on welfare	About \$10,000	3%

Source: Based on Gilbert, Dennis, and Joseph A. Kahl. *The American Class Structure: A New Synthesis*. 4th ed. Homewood, Ill.: Dorsey Press, 1993. Income estimates follow Duff, Christina. "Profiling the Aged: Fat Cats or Hungry Victims?" *Wall Street Journal*, September 28, 1995a: B1, B8.

- Many aspects of society are at least partially dependent on designated roles such as race, ethnicity, class, gender, language, sexual orientation, and belief
- These roles project themselves into everyday objects and interactions.



Introduction



- Common societal roles that are present and visible everywhere: BATHROOMS!
- We can see these color designated bathrooms even at YORK COLLEGE.
- Pink for Females and blue for males.

Introduction



- Speaking on the racial aspects: Who do you think is most likely to drive taxis?
- Society is intrinsically involved with race and thus also results in preemptive racial judgement.
- America is a prime example of a melting pot.

Introduction



- Masculinity is seen as an exclusive trait for men whilst femininity is seen as an exclusive trait for females.
- Is it okay for men and women to have both masculine and feminine traits? Acceptance of these traits change over time.

Introduction



- When a male and female come across a door, who is more likely to open it for the other?
- Gender roles dictate even simple interactions such as holding a door open and may be seen in other interactions such as paying on a date.

Race In World culture



- Race has a impact on each culture, In some cultures race can mean whether or not you belong in that culture or not. While some cultures embrace all races.
- A good example of this would be in Hitler's Aryan race concept. He believed that the german people were superior to every other race and thought that no other race was good enough to join them.

Race in World Culture Con't

- On the other hand some races mix in with other cultures because of things that happened in history. For example Indians mixing with african americans in the west indies to for several tropical countries and cultures.

Ethnicity



- When it comes to ethnicity we tend to separate. Most ethnic groups like to stay together because they feel comfortable living with their own groups.
- This is can be shown in a certain neighborhoods were there are dominated by a particular ethnic group. Ethnic groups would be considered as belonging to a social group that has a common national or cultural tradition.

Language



- There are many forms of communication in our society and with each culture comes a different language.
- Sometimes a language may not come with a culture it can be a universal language which in this case would be body language . We all do simple hand gestures and facial expressions that communicate our points.

Language Con't

- Then we have languages like Spanish, French and German which are used by different ethnic groups. Each one of these groups have there own way of communicating

Sexual Orientation



- As humans we are born with certain sexual orientations but sometimes we may feel that we do not fit that particular gender we were born in. That's where they will change their sexual orientation to match how they feel.
- Since they decide to make this change they might be judged by society and seen as weird when to them it's just them trying to find themselves.

Gender



- Gender refers to the roles, power, and responsibilities that are created by society or community to men and women.
- These norms are created by culture and how and where you are raised.

Roles



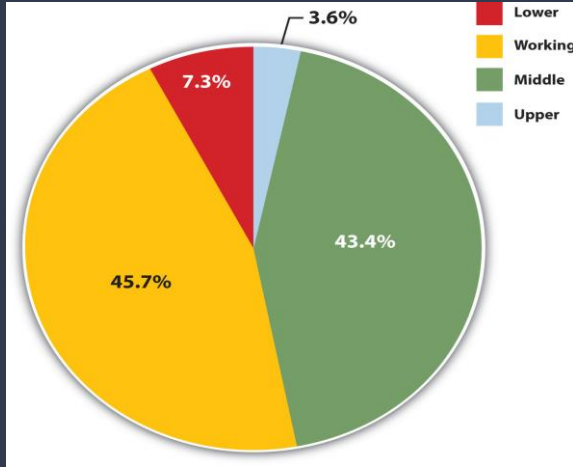
- There are many expectations from the society based on your gender.
- Boys are expected to pursue being doctors, lawyers, police officers, and more.
- While girls are expected to pursue being a nurse, a babysitter, housewives, cooks, cheerleaders, and more.
- A job should have a role in what gender should pursue what. It is very stereotypical and outdated.
- In many countries, there is still lack of education for women because they do not deserve it and are not “capable” of doing “great things” like the men.

Gender Equality



- Our society and community teaches us the roles we should play based on our gender and that is how gender equality became more aware.
- Even though, equality between men and women are better than before, there are still significant improvements we need to make.
- Women are given very little opportunities than men in everyday life.
- Women are not being paid equal who are doing the same job as men.
- There are still people who think that women should not be getting educated and even if they are, it is okay to fail because they can get married and be a housewife.
- Women can be independent and do not need men to help her live.

Social Class



- Social class is very significant because it provides security and benefits such as healthcare based on your income.
- There are higher number of working class and fewer of the upper class.
- Social class determines how successful you will be by education, income, and jobs.
- Lower class people won't have the full resources needed to succeed because their top priority usually is to survive and they go for minimum or less wage jobs.

Social Class Con't



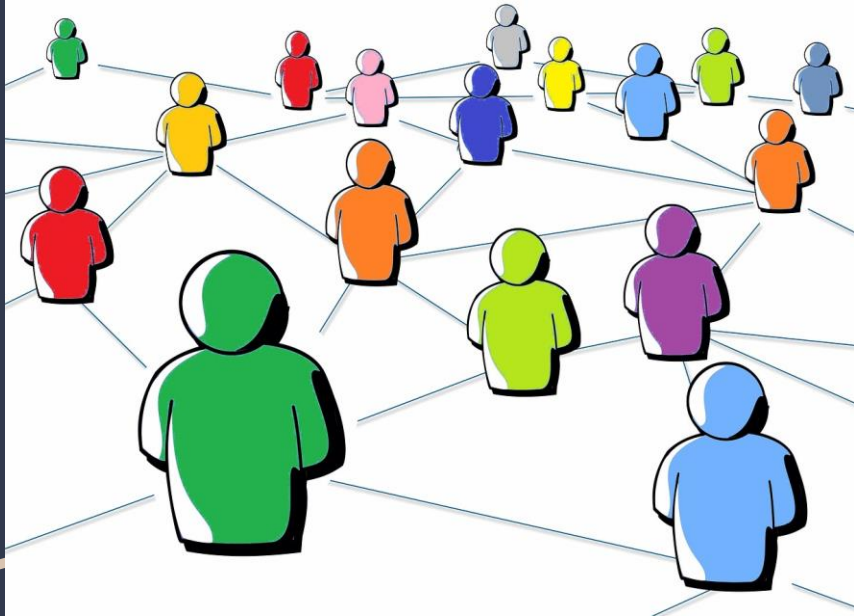
- Poor areas are limited with sources they need like supermarket, schools, work, etc.
- Schools will not have the proper teachers to teach to young students.
- Their health physically and mentally are usually to be very weak because of the stress of surviving basic needs.

Belief and it's social impact.



- Belief is the foundation for all our actions and thus this determines what we do in our life.
- What we do in life will then lead to how we are judged by the outside world.
- E.g, If an individual believes it is wrong to look someone in the eye when they are speaking, then that individual may be judged to be untrustworthy in some countries.
- Belief impacts gender roles very strongly because if one race strongly believes that a woman or a man should never have a certain type of job then society will have them grouped into the job category that they are willing to work in.

Other forms of social differentiation



- People may be socially differentiated based on what they like and what their ideals are.
- If a kid idolises rappers then he may try to dress like them and replicate their mannerisms and behavior. This will cause him to be accepted in specific social circles and thus into another demographic in society.
- Smaller aspects such as one's taste in fashion will also impact how society views an individual. An example of this would be how a well dressed individual would be more likely to have a higher paying job.

Other forms of social differentiation contd.



- Someone's personality and mannerisms will affect how they are treated and viewed by society.
- Loud extroverts are more likely to have more friends than introverts.
- Individuals with a naturally angry facial expression may find it harder to make new friends. They are also less likely to receive big opportunities like a higher paying job. This stems from societal judgement.
- An individual's age has a strong impact on how society will treat them. An older person would be more likely to get mugged than a younger person
- An older person would have a harder time finding certain jobs because employers may judge them to be unfit for the job.

Other forms of social differentiation contd.

- Where someone lives will affect how they are viewed by society. Someone coming from a rich neighborhood will have different stereotypes than an individual coming from a poor neighborhood.
- Someone may also be judged based on the friends they have. Society will believe that they are similar to the friends they hang around.
- Many smaller aspects cause judgement such as the school one attends, family's job, family reputation etc.

Questions
Comments
Feedback

Thank You!
Group 2